

SOLUTIONS

SUMMER 2020



Anytime, Anywhere!

**Online and Mobile
Banking. Make
deposits, check
balances, pay bills
and transfer funds.**



Learn more at www.sccfcu.org.

We're Here To Help



Open To Serve You

County Federal is committed to caring for the health and well-being of our members and employees. We want you to know that we are here to serve you and want to share information about the steps we are taking to continue to operate safely.

Our branches remain open with the following restrictions:

- We will have limited staff in each branch.
- We are limiting the number of members that may be served inside a branch at any time.
- Members are asked to maintain social distancing of a 6-foot safe distance while waiting for service at the branch (we have placed markings on the ground to help you with this safe distance).
- To comply with requirements and recommendations from health officials and local governments, appropriate face coverings are required when visiting our branches. Please wear a medical mask, cloth mask, or bandana over your nose and mouth. For identification purposes, you may be asked to temporarily lower your mask by our staff.

For more information visit
www.sccfcu.org/coronavirus-steps-we-are-taking/.

EXPANDED HOURS STARTING JULY 1ST

City Centre and West Hedding Branches are temporarily closed.

For in person services visit these locations.

Almaden Branch

5353 Almaden Expressway, Suite 65
San Jose, CA 95118

Campbell Branch

Kirkwood Plaza
1638 W. Campbell Avenue
Campbell, CA 95008

East San Jose Branch

255 N. White Road, Suite 112
San Jose, CA 95127

Gilroy Branch

6915 Camino Arroyo, Suite 50
Gilroy, CA 95020

HOURS

Monday - Friday
9 am - 5 pm

Saturday Closed

In an effort to balance the health and safety of our members and employees with the "shelter in place" guidelines and our role as an essential service provider, we have made a few changes to our branch hours.



Explore New Modules in the Financial Fitness Center!



Financial Wellness in Uncertain Times - Boost and protect your financial health by learning how to plan, budget and save for a rainy day.

EVERFI Family Portal - Looking for great remote learning resources for your kids? Check out the library of 20+ digital courses, including our sponsored Venture and Financial Literacy programs.

Get started today at www.sccfcu.org/financial-fitness-center.

GIVE US A CALL

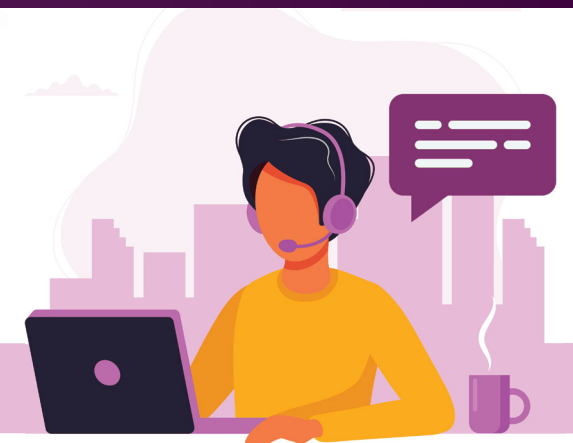
Contact Center

1641 N. 1st St., Suite 170 • San Jose, CA 95112

Monday - Friday 8 am - 6 pm

Saturday 9:30 am - 2:30 pm

(408) 282-0700 / (800) 282-6212



Keeping Your Information Safe



Some tips to help keep you safe in the days ahead:

- County Federal will never ask you to verify account information, such as your name, account number or password in an email.
- Fake email or text messages can look legitimate. It may contain the company logo or phone number. Remember, it only takes a few seconds to navigate to sccfcu.org yourself and sign into your account, change your password and view your activity. Do not open any attachments or click any links.
- Do not share your logins, banking information or other personal information in response to an email.

Learn more at: www.sccfcu.org/security

SCAMMERS AND CYBER-CRIMINALS may try to take advantage of your concerns related to COVID-19. With millions of people filing for unemployment, awaiting stimulus checks, and moving towards digital banking – fraudsters are using the internet, telephone calls and texts in their attempts to obtain money or data. Watch out for

emails, texts, posts or ads offering vaccines, products, medical tips or even charitable donations in exchange for your information, money, or clicks.

If you suspect you're a victim of fraud or attempted fraud, act fast. Call us to report it: (408) 282-0700 or (800) 282-6212.



BOARD OF DIRECTORS & EXECUTIVE LEADERSHIP TEAM

EXECUTIVE LEADERSHIP

Rebecca Reynolds Lytle
President & Chief Executive Officer

Joe Bonacci
Senior Vice President & Chief Information Officer

Ie-Chen Cheng
Senior Vice President & Chief Financial Officer

Divine David
Senior Vice President & Chief Experience Officer

Jennifer Montero
Senior Vice President & Chief Human Resources Officer

BOARD OF DIRECTORS

Peter Ng
Chair

Jose Luis H. Pacheco
Vice Chair

Deborah Baker
Director

Dave Cameron
Director

David Indra
Secretary/Treasurer

Juan Ledesma
Director

SUPERVISORY COMMITTEE

Traci Hess
Chair

Lesha Luu
Member

Candace Nisby
Member

Maria Oberg
Member

David Indra
Board Liaison

Financial Profile

(As of 05/31/2020)

Assets.....	\$852,681,625
Loans.....	\$505,171,936
Shares	\$731,113,744
# of Members	51,746

ROUTING NUMBER: 321176972

NMLS #: 415778

The articles and opinions in this publication are for general information only and are not intended to provide specific advice for any individual. We recommend that you consult your attorney, accountant or financial or tax advisor with regard to your individual situation. Entire publication ©Santa Clara County Federal Credit Union 2020. All rights reserved.



Your savings are federally insured to at least \$250,000 and backed by the full faith and credit of the United States Government. National Credit Union Administration, a U.S. Government Agency.

